

May 2026



**END
COMMUNITY
VIOLENCE
NOW**

AGENDA

01 Welcome & Introductions

02 CVI 101

03 ECVN Programmatic
Overview

04 Question and Answer

TABLE OF CONTENTS

01 Welcome &
Introductions

Our Team



Lauren Footman
Executive Director

Lauren@ecvndelaware.org



Danielle Fisher
Program Officer

Danielle@ecvndelaware.org

TABLE OF CONTENTS

02

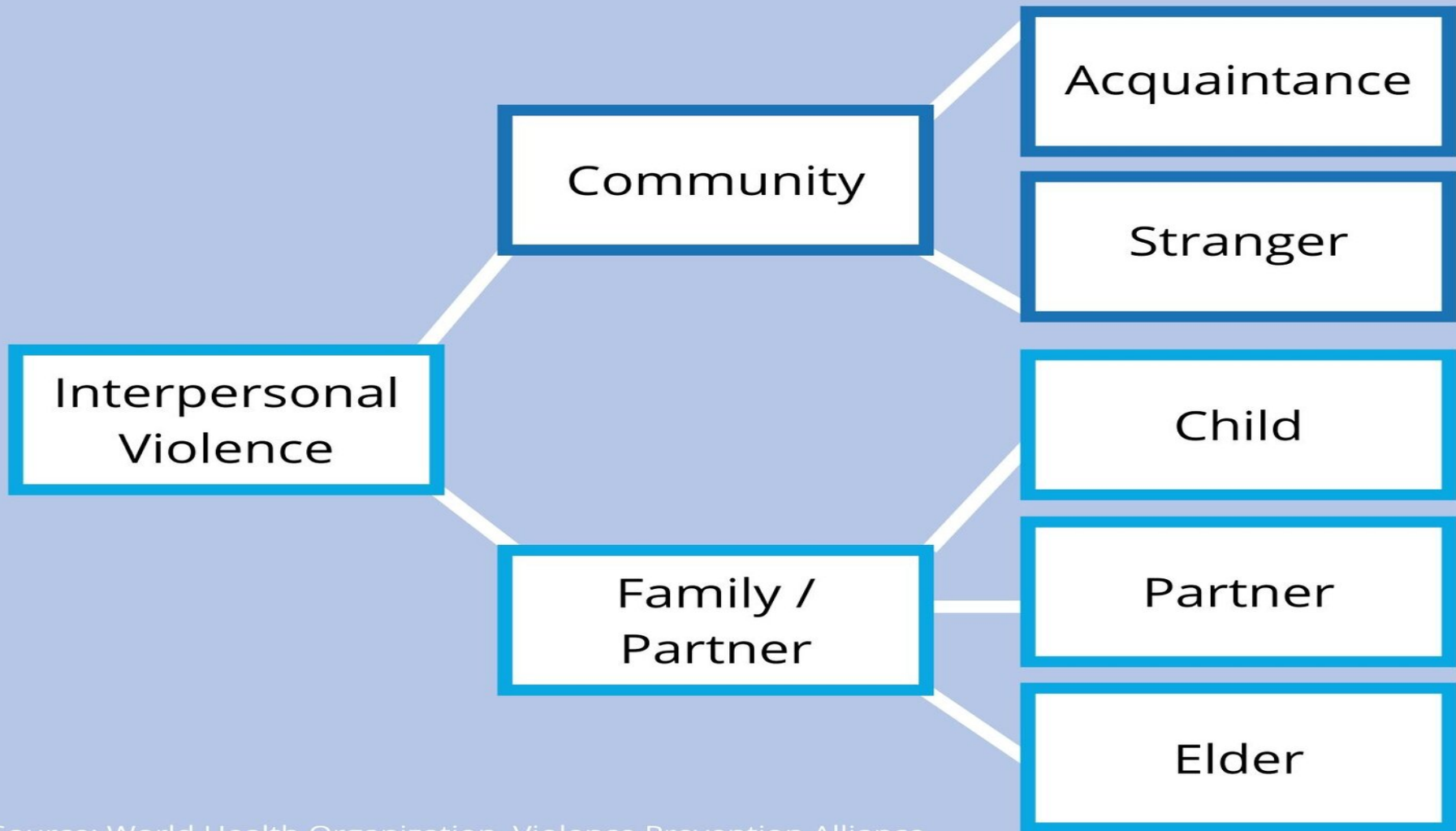
ECVN Timeline &
Background

Community Violence

According to the World Health Organization, community violence is defined as the “**intentional** use of physical force — threatened or actual — to cause injury, harm, or death to an **acquaintance or stranger.**”

Community violence is separate and distinct from intimate partner/family violence.

When we say community violence in Delaware, we are primarily focused on violence that involves a **firearm.**



Community Violence Intervention (CVI)

- The field is evolving to describe any work designed to interrupt the transmission of violence by engaging those at highest risk as “**Community Violence Intervention.**”
- CVI is separate and distinct from gun violence prevention.

| Community Violence Intervention | Gun Violence Prevention |
|---|---|
| <p>Goal: Support individuals at highest risk of engagement in community violence (as a victim and/or perpetrator).</p> | <p>Goal: Preventing all forms of gun violence before they happen through policy, community education, and prevention programs.</p> |
| <p>Primarily Focused On:</p> <ul style="list-style-type: none">● Retaliatory Violence● Group Violence | <p>Primarily Focused On:</p> <ul style="list-style-type: none">● Suicide● School/Mass Shootings |

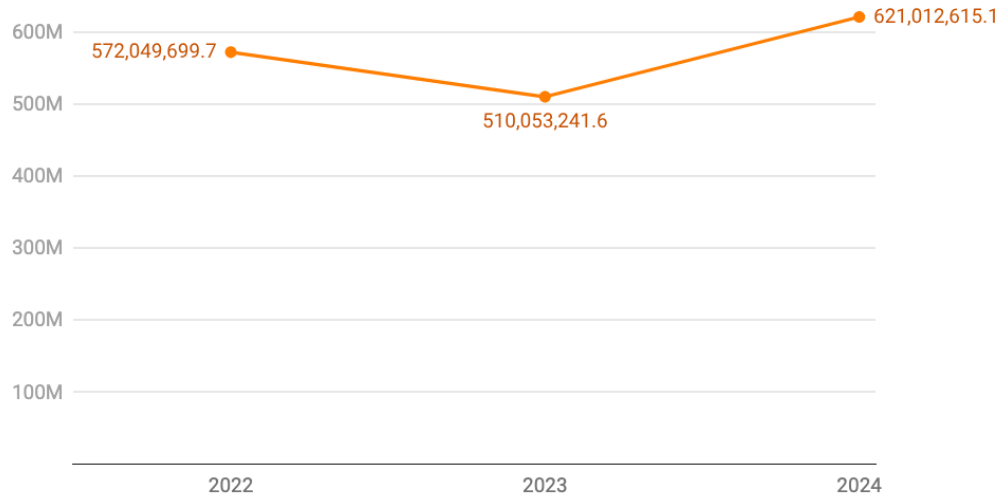
Who is most likely to experience community
gun violence?

The Impact of Community Gun Violence

| Direct Impact | Indirect Impact |
|--|--|
| <ul style="list-style-type: none">● Injury, reinjury, or death● Continuous or post traumatic stress● Maladaptive coping mechanisms● Increased likelihood of risky behaviors | <ul style="list-style-type: none">● Community exposure to violence which leads to community trauma● Neighborhood level effects● Economic effects |

Data Overview: Firearm Homicide Cost

Combined Costs of Firearm Homicide Fatalities in Delaware 2022-2024



Source: WISQARS Cost of Injury. Centers for Disease Control and Prevention. Available: <https://wisqars.cdc.gov/cost/> • Created with [Datawrapper](#)



How Does Delaware Compare Nationally?

Gun Death Rate (Per 100,000) in 2023

| Delaware | United States |
|---------------------------------|--------------------------------|
| 12.02 deaths per 100,000 people | 13.9 deaths per 100,000 people |

How can we **address** community gun violence?

The Need for Intervention

“First you stop the bleeding, because unless you stop the bleeding,
nothing else matters.”

“Meaningful progress on fundamental socioeconomic conditions will take generations to achieve. People living with the reality of urban violence **need relief right now.**”

Thomas Abt, Bleeding Out: The Devastating Consequences of Urban Violence—And a Bold New Plan for Peace in the Streets

Evidence Based Reduction Programs



Hospital-Based
Recovery and
Re-injury Reduction



Community-Based
Street Outreach and
Violence Interruption



Law Enforcement
Group Violence
Intervention

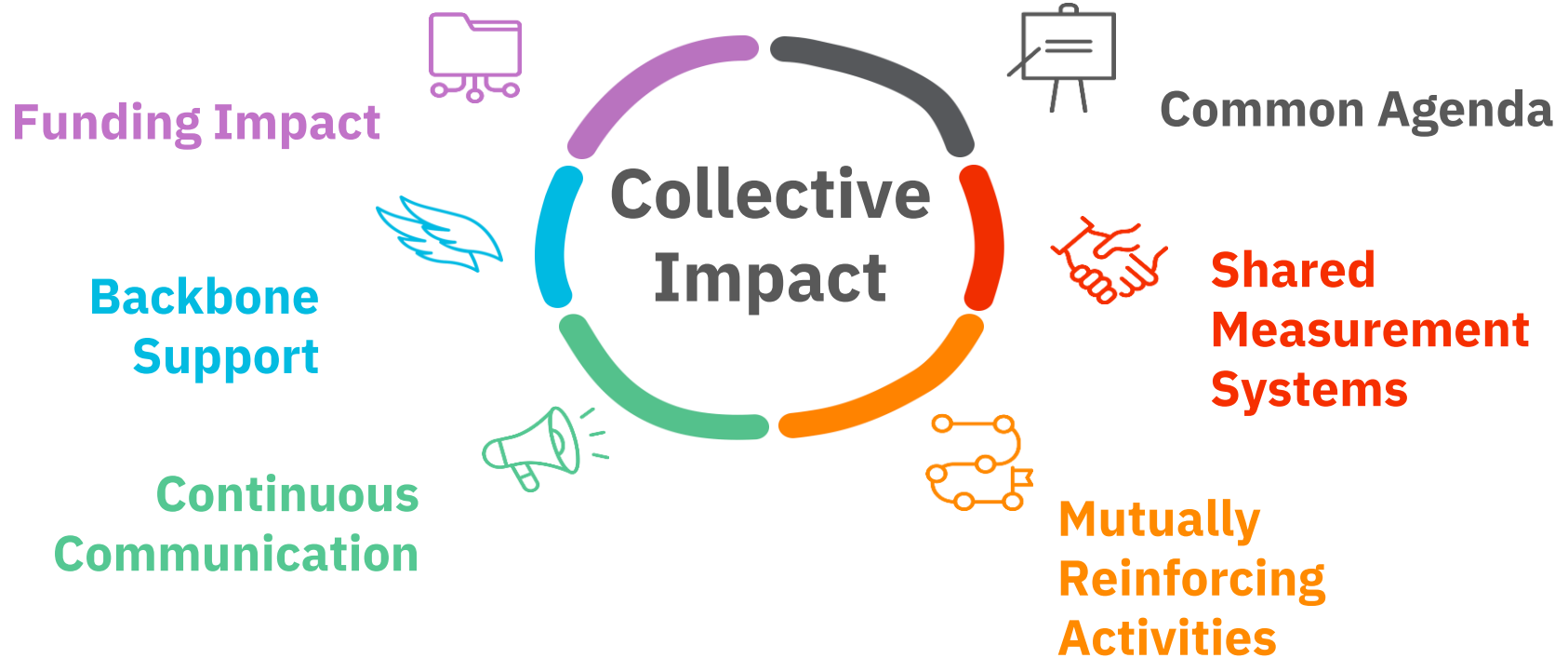
Presence of Programs is NOT Enough

We also need to:

- provide coordination in the ecosystem
 - fund evidence-based programs to fidelity
 - ensure a standard of care
 - engage in ongoing evaluation
-
- and much more!

This is where End Community Violence Now comes in!

A Collective Impact Approach



The Solution

A Comprehensive Approach

Intervention

**Targeted
Enforcement**

Prevention

Healing

**Macro-Level
Change**



Reductions in Gun Violence



**END
COMMUNITY
VIOLENCE
NOW**

End Community Violence Now

Mission, Vision, and Values

Vision: Every person in Delaware will be safe from community gun violence.

Mission: Grow a unified, statewide community gun violence reduction ecosystem that **breaks the cycle of violence** and **fosters safer communities** in Delaware.

Values:



Collaboration



Knowledge



Accountability



Respect



Commitment



Equity

OUR THEORY OF CHANGE

We seek to advance community gun violence reduction through these 7 key areas:

1



STRATEGIZING

We provide statewide strategic guidance by aligning cross-sector partners around evidence-based, community-informed approaches to reduce gun violence sustainably and at scale.



FUNDRAISING

We secure and align public and private funding to support the implementation and long-term sustainability of community violence intervention efforts statewide.



ADVOCATING

We advance policy and systems change by equipping partners and decision-makers with data, research, and strategic insights through a public health and health equity lens.



RESEARCH AND EVALUATION

We strengthen accountability and impact by supporting shared measurement, data analysis, and evaluation to inform continuous learning, policy, and investment decisions.



COORDINATING

We serve as the central hub connecting local and state partners to ensure collaboration, alignment, and shared accountability across the CVI ecosystem.



GRANT MAKING

We administer and oversee grants to community-based organizations, pairing funding with technical assistance to ensure effective, measurable violence reduction outcomes.



EDUCATING

We support public education and awareness by sharing data, research, and best practices that inform communities and elevate evidence-based violence prevention strategies.

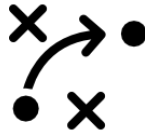
2026 Priorities

1



**Deepen
Relationships**

2



**Coordinate a
statewide CVI
ecosystem in all
three counties**

3



**Strengthen the
CVI workforce
and partner
capacity**

4



**Advance data,
evaluation, and
policy to sustain
CVI**

TABLE OF CONTENTS

03 Program Overview

Wilmington Efforts

- Coordinates Bi-weekly Wilmington CVI Coalition Calls since June 2025
 - Hosted: ChristianaCare, Community Health Workers Association, The Department of Corrections, The Kids Department, Project New Start, Pushing Progress Philly, Survivor Ventures, Wilmington Housing Authority.
 - Quarterly presentations from Chief Campos of Wilmington Police Department to ensure dissemination of accurate data and build rapport with community and law enforcement
 - Includes participation from the Mayor's Office, and Deputy Secretary of Safety and Homeland Security
- In August 2025, facilitated a Violence Reduction Council training in partnership with the Johns Hopkins Bloomberg School of Public Health Center for Gun Violence Solutions.
- In Quarters 1 and 2 of 2026, coordinated Mental Health First Aid Certification with the Mental Health Association of Delaware, Organizational Trauma Certificate via Wilmington University, and PTSD 101 with the University of Delaware.
- Engaged Wilmington GVI Leaders in Transition participants by supporting professional development opportunities and strengthening community-based violence intervention efforts.
- Donated all bookbags for the Stop the Violence Prayer Chain for annual back to school event in 2025.
- Routinely shares funding and providing letters of support for the Wilmington Police Department.

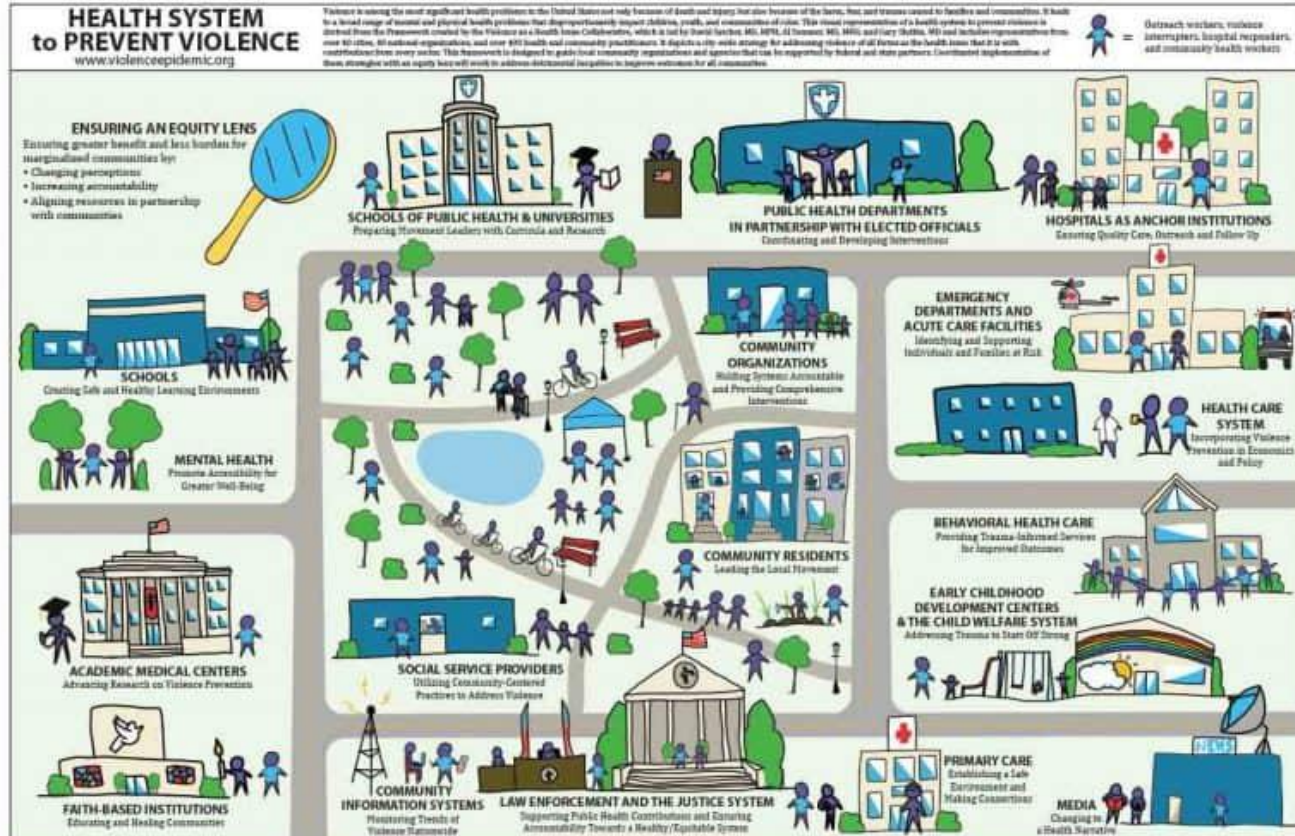
Cure Violence Global (CVG) Implementation

Treating Violence as a Contagious Disease

- Grounded in a public health framework, Cure Violence Global supports the implementation of evidence-based, data-informed violence reduction strategies.
- Since 2000, Cure Violence Global has supported violence prevention and intervention efforts in more than 100 communities across 15 countries.
- Reported outcomes include a 75% reduction in killings in Charlotte, a 90% reduction in killings in Culiacán, Mexico, and a 63% reduction in shootings in New York City.
- Strengthens coordination across community-based organizations, healthcare systems, and state partners while implementing one evidence-based model with fidelity.



Cure Violence Global (CVG) Implementation



Cure Violence Global (CVG) Implementation

Training & Technical Assistance Schedule

- **April 6–10**
Program Management Training
(Program Managers & Supervisors)
- **May 4–8**
Violence Interruption & Reduction Training
(Violence Interrupters, Outreach Workers, Site Supervisors, Program Managers)
- **June 1–5**
Outreach Worker Training
(Outreach Workers & Supervisors)
- Ongoing coaching & technical assistance throughout implementation.



Grantee Community of Practice

- A statewide network supporting violence intervention organizations across Delaware
- Provides a collaborative space for peer learning, training, and shared resources
- Uses evidence-based strategies to strengthen capacity and effectiveness
- Promotes sustainable violence reduction through collective expertise



Healthcare Community of Practice

Launched in early 2026, the Healthcare Community Violence Intervention Community of Practice is a collaborative initiative that brings together hospitals, health systems, providers, and allied partners to deepen understanding of community violence intervention (CVI) and strengthen coordinated responses—both within healthcare settings and in partnership with the communities they serve.

Program goals include:

- Building a connected learning community across healthcare institutions and networks
- Sharing best practices, insights, and lessons learned in violence prevention and intervention
- Identifying opportunities to expand access to high-quality mental health professionals and supportive resources
- Exploring collaborative initiatives that advance healing, safety, and community trust



CVI Investor Meetings

- Strategic convenings for public and private funders in Delaware
- Increase awareness of the CVI landscape, community needs, and priority gaps
- Share insights on research, evaluation, and funding opportunities
- Promote informed, strategic, and impactful investments
- Build a collaborative, sustainable funding ecosystem supporting data-driven, community-led violence reduction



Emerging Initiatives

Delaware Government Alliance for Violence Reduction

An intergovernmental coordination structure designed to reduce community violence and increase support for victims of crime in Delaware by aligning policy, budgeting, and implementation strategies across federal, state, county, municipal, and public education systems in support of violence reduction efforts in Delaware.

Workforce & Community Safety Alignment Council

Cross-sector leadership body designed to align Delaware's workforce development ecosystem with Community Violence Intervention (CVI) strategies .CVI organizations engage individuals at highest risk of violence — often the same individuals navigating structural employment barriers

TABLE OF CONTENTS

05

Question and Answer

END

COMMUNITY

VIOLENCE

NOW