



# Wilmington City Council:

**The Education, Youth, and Families Committee**

Dr. Sterling H. Seemans



# Dr. Sterling H. Seemans

- Principal (BSD): Springer Middle School  
July 2023-Present
- Principal (CCPS): Perryville Middle  
School July 2021-June 2023
- Assistant Principal (CCPS): Elkton  
Middle School, Rising Sun High School,  
& Elkton High School July 2016-June  
2021
- Principal (DSCYF): Terry Children's'  
Center & Silver Lake Treatment Center  
July 2012-June 2016
- Teacher (DSCYF) : Ferris School for  
Boys and NCCDC February 2009-June  
2012
- B.S., M.Ed, & Ed.D from University of  
Delaware



# Table of contents

01

**Connection Before  
Content**

02

**BSD  
Referendum**

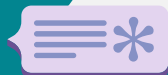
03

**Supporting  
Our Students  
at Springer**

MTSS

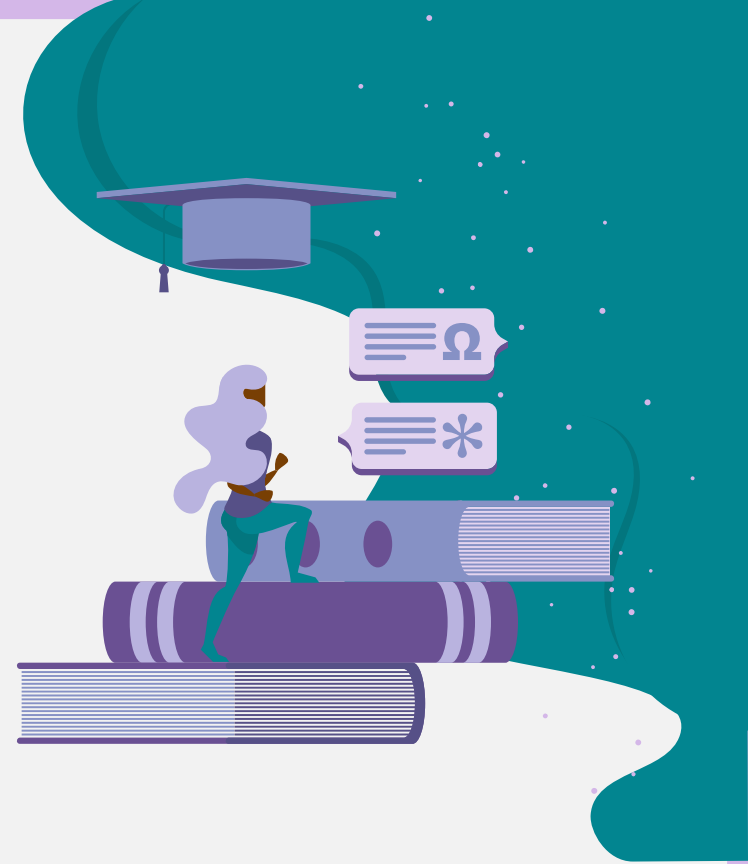
04

**How You Can  
Help**



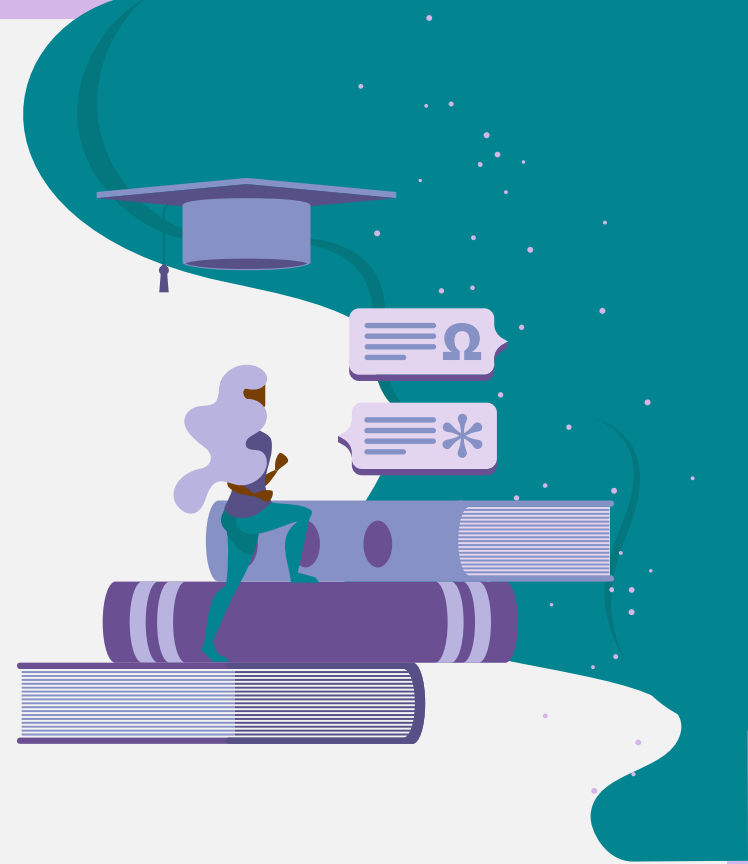
# 01: CBC

If you could relive one day over and over for the rest of your life what would it be and why?



# 02: BSD Referendum

If you could relive one day over and over for the rest of your life what would it be and why?





## Types of Referendums

### Brandywine's Budget

#### Operational

Costs associated with day-to-day operations of the District

#### Capital

Costs of major construction projects



# Types of Referendums

## Brandywine's Budget

### Operational

Costs associated with day-to-day operations of the District

### Capital

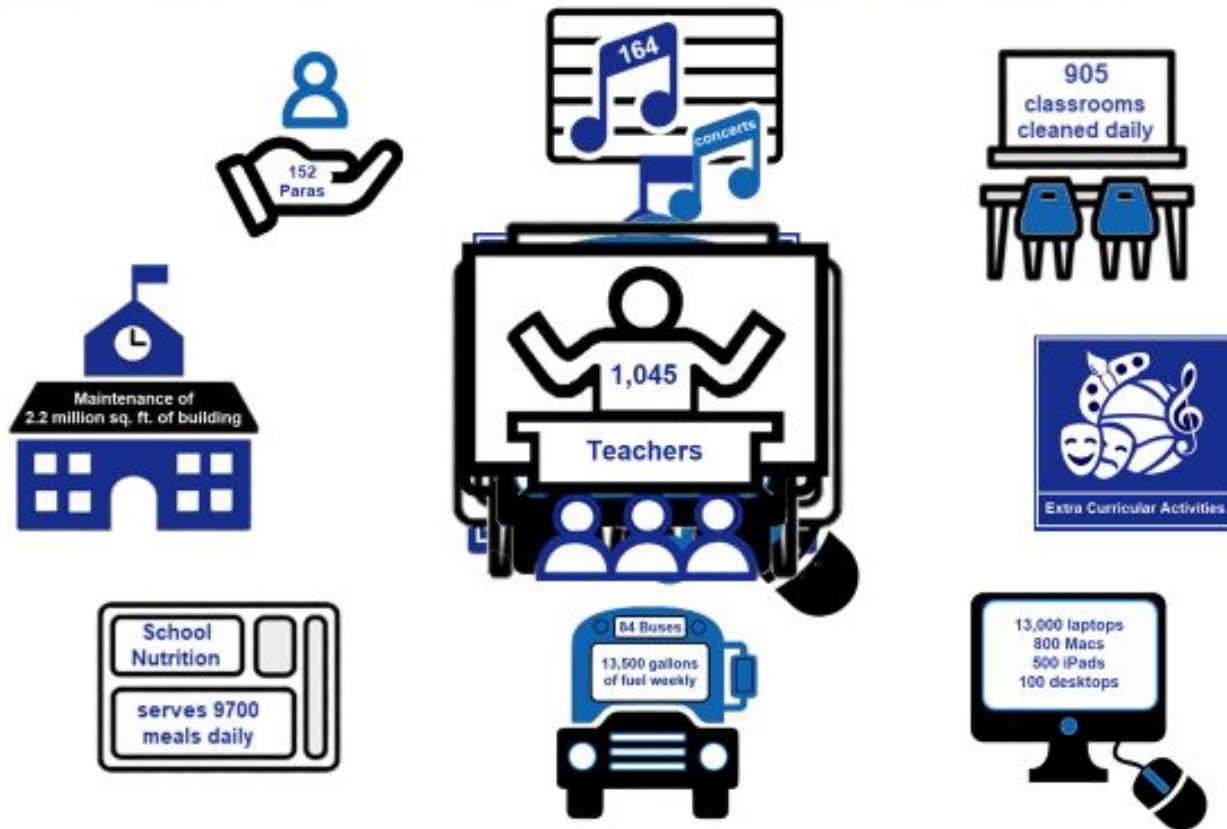
Costs of major construction projects

- New Bush Early Childhood Center
- Renovation MPHS
- Renovation MPE
- New S.I.T.E. Building on Rt. 202
- Adaptive Playground Projects



# Operational Funds

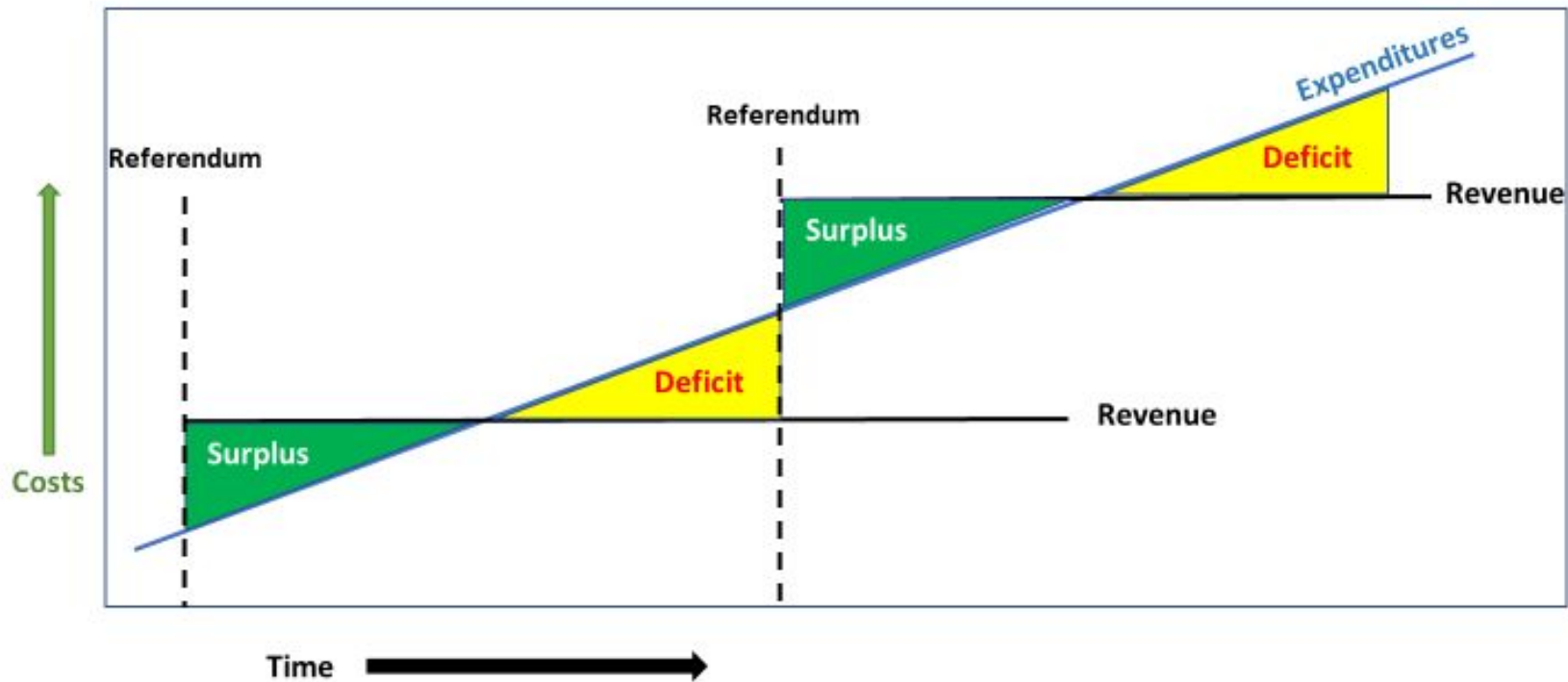
## The Day-To-Day Costs of Providing Services to Students





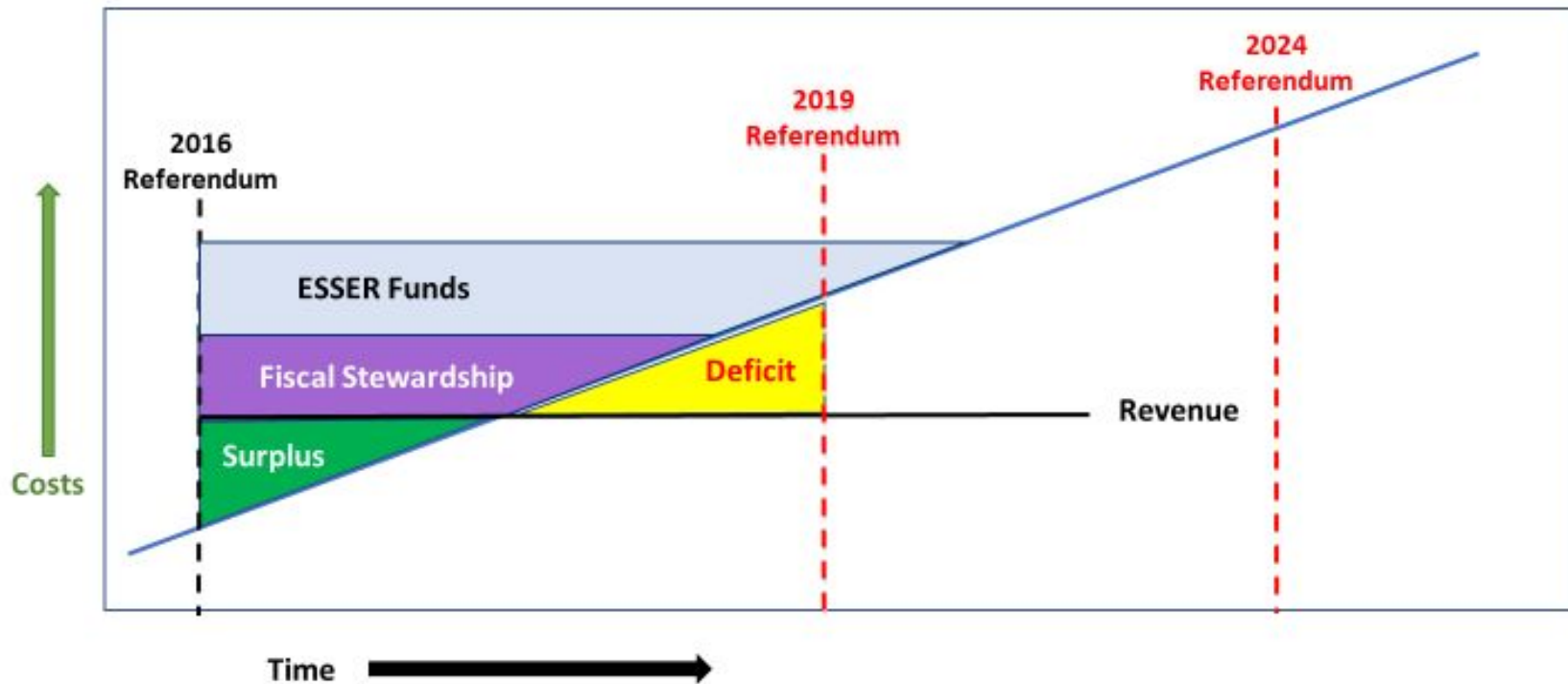


# The Referendum Cycle for Operational Funds





# BSD Current Operational Referendum Cycle





**We Delivered**



**Accomplished since 2016 Operating Referendum**

- After School Programming
- Athletics
- AVID
- Extracurricular Activities
- One-to-One Technology
- SRO / Constables Program
- Safety & Security Initiatives
- Lower Class Sizes
- Expanded High School Pathway Opportunities
- Gifted, Advanced Placement, International Baccalaureate
- Renovation Projects
- Curriculum Adoption
- Expanding Alternative Education Options
- Dual Enrollment
- Spanish Immersion
- STEM Programming
- Expanded Visual and Performing Arts
- Teacher Attraction and Retention



# What will this Referendum Support?

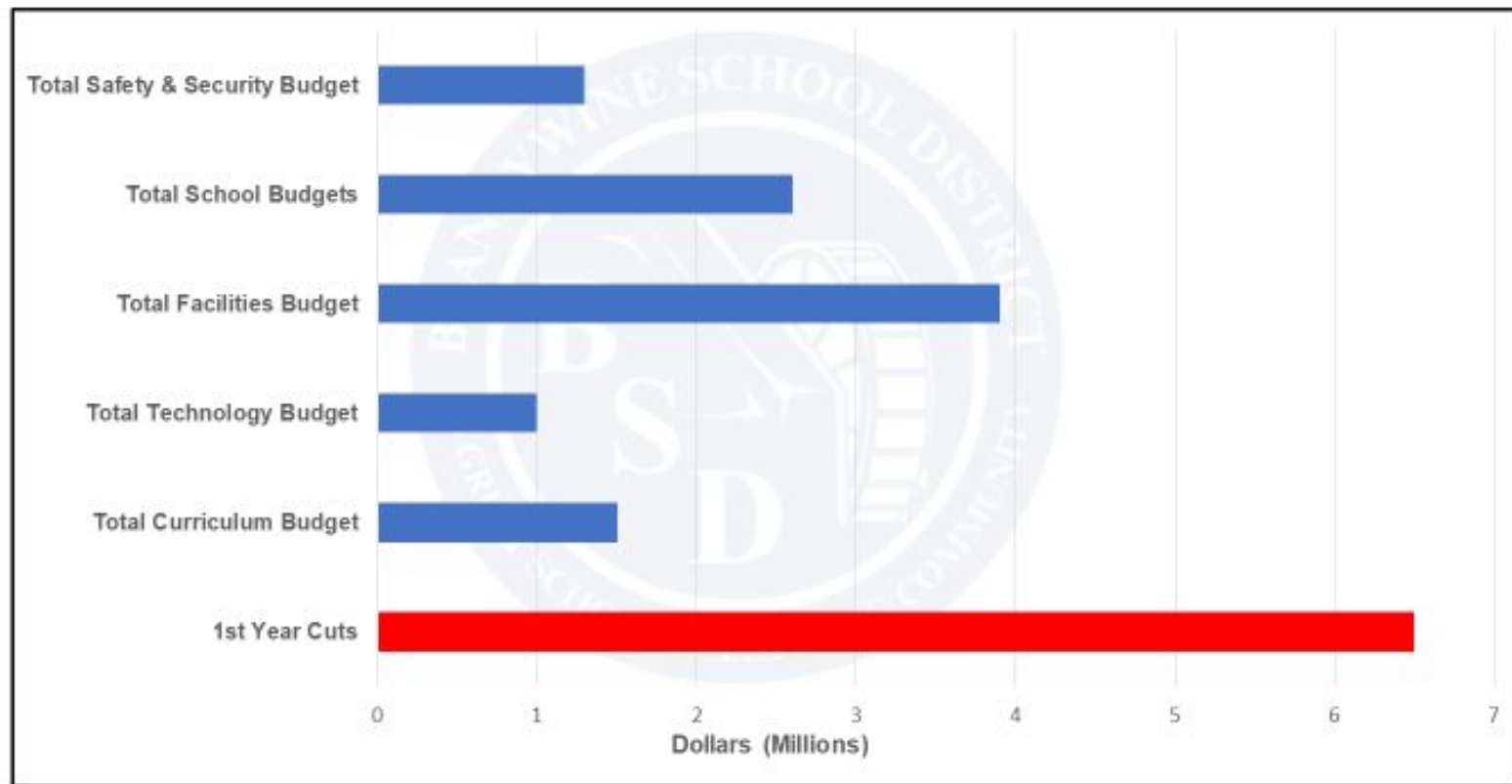
Continuation and Maintenance of:

- Safety and Security (School Resource Officers & Constables)
- Alternative Education & Non-Traditional Programming
- Attracting & Retaining High Quality Educators
- Curriculum & Instruction Improvements & Programming
  - Gifted, International Baccalaureate (IB), AVID, Immersion, Visual & Performing Arts
- High School, Middle School, Elementary Athletics and Clubs
- Technology (student & classroom devices)
- Sustaining the BSD Standard of Facilities Maintenance





## Scale of First Year Cut of \$6.5M





## Phasing Scenarios and Recommendation



Fiscal Year	\$0.45		<b>\$0.25/0.20</b>		\$0.25/0.15/0.05	
	06/30	Rev/Exp	06/30	Rev/Exp	06/30	Rev/Exp
FY 24	\$5.9	-\$3.4	<b>\$5.9</b>	<b>-\$3.4</b>	\$5.9	-\$3.4
FY 25	\$13.9	\$8.0	<b>\$6.9</b>	<b>\$1.0</b>	\$6.9	\$1.0
FY 26	\$16.7	\$8.0	<b>\$9.7</b>	<b>\$2.8</b>	\$8.0	\$0.0
FY 27	\$16.7	\$2.8	<b>\$9.7</b>	<b>\$0.0</b>	\$8.0	\$0.0
FY 28	\$15.0	-\$1.7	<b>\$8.0</b>	<b>-\$1.8</b>	\$6.2	-\$1.8



## Referendum Impact on Tax Bills

Fiscal Year	Current Tax	\$0.25/.0.20 Scenario	Increase	Per Month
Year 1	\$1,831	\$2,013	\$182	\$15.15
Year 2	\$2,013	\$2,158	\$145	\$12.12
Year 3	\$2,158	\$2,158	\$0.0	


Based on **average** Brandywine assessed value of \$72,701  
Property assessments currently based on 1983 Values



# Average Brandywine Parcel Example

← Feed Overview Home details Redfin Estimate Schools

SOLD JUL 31, 2023




Street View

SOLD ON JUL 31, 2023

Haines Ave, Wilmington, DE 19809

<b>\$355,000</b>	<b>4</b>	<b>2</b>	<b>1,675</b>
Sold Price	Beds	Baths	Sq Ft



## Tax/Assessment Info

### Assessment

Land:	10200
Structure:	49900
Homesite:	0
Total:	60100
County Taxable:	60100
School Taxable:	60100

Year 1: \$12.52 per month (\$0.25/\$100)

Year 2: \$10.02 per month (\$0.20/\$100)





## How does County Reassessment Impact the Referendum?

- It doesn't
- Currently underway in all 3 Delaware Counties
  - Kent will start FY25
  - NCC will start FY26
  - Will update from 1983 assessed value to market value
  - Corrects inequities in tax collections
- Reassessment must be **REVENUE NEUTRAL** for BSD
  - Tax rates will be adjusted to collect total district amount prior to reassessment
  - State law allows districts 10% provision related to delinquencies, appeals, and growth. BSD has never used this provision to increase revenue.



# State Law Requires **Revenue Neutral** Reassessment

**Current**  
(Pre-Reassessment)



1983 Assessed Property Value

@

**Tax Rate** =



Local Revenue

**FY 26**  
(Post-Reassessment)



2026 Assessed Property Value

@

**Tax Rate** =

# What will this referendum support?





## After School Programming





# Athletics

## Fall 2023

- Blue Hen Conference Champions
  - BHS Girls Cross Country
  - BHS Boys Soccer
- Flight B Champions
  - CHS Boys Cross Country
  - CHS Field Hockey
  - CHS Volleyball
- 396 Academic All-Conference Recognitions

## 2022-2023 Highlights

- DIAA School Sportsmanship Awards
- 27 All-State Athletes





# Extra-Curricular Activities

## Disney's Frozen Musical – MPHS 2023

### BrandywineBOTS & VEX Robotics

- **Delmarva Champions**

- Middle School, 2021, 2022, & 2023
- High School, 2021 & 2022
- MPHS JROTC, 2023
- Springer, 2020
- Talley, 2019

- **World Championships**

- Build Award, 2022
- Sportsmanship Award, 2023

### Math League – PS duPont 2023

- **1st Place** in Delaware

- **Two** 8th grade teams tied

- **2nd Place** in Delaware

- 7th grade team





# Safety and Security Initiatives

2016



2023





# High School Pathway Offerings

## Communications

*Digital Design, Journalism, Radio Broadcasting*

## Awards in Journalism

- WMPH 91.7 Radio Station at MPHS run by students
- **National 1st place, 3rd place, and Honorable Mention** from the National Federation of Press Women contest

## Recently added high-wage salary Pathways:

- BioMedical & Computer Science

## Industry-recognized Certifications earned:

- Culinary - ServSafe
- Patient Care Technician - Certified Nursing Assistant & Phlebotomy





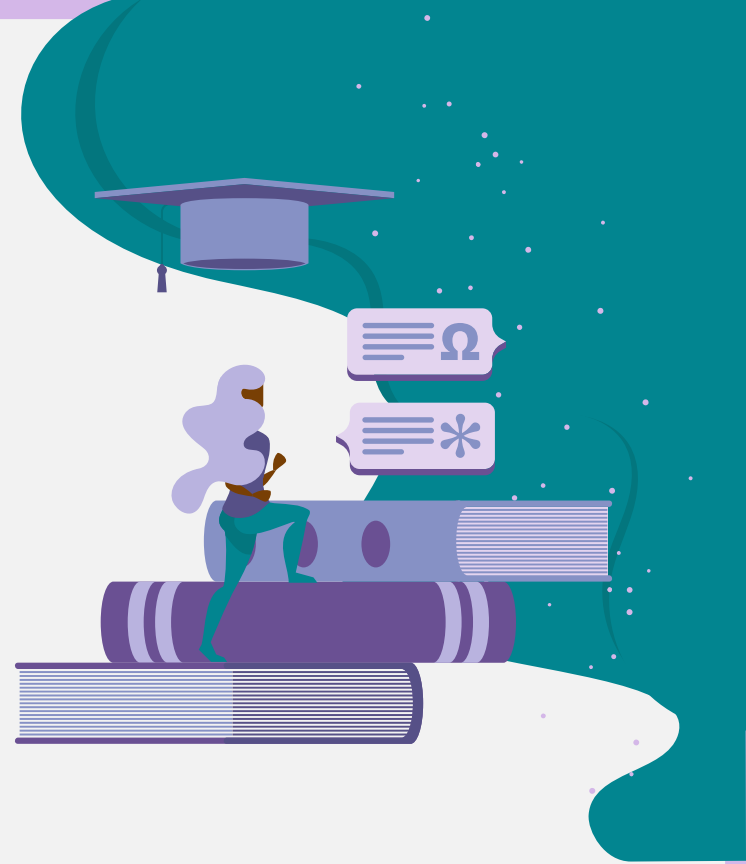


## Dual Enrollment Programs - PCT



# 03: Supporting Our Students at Springer

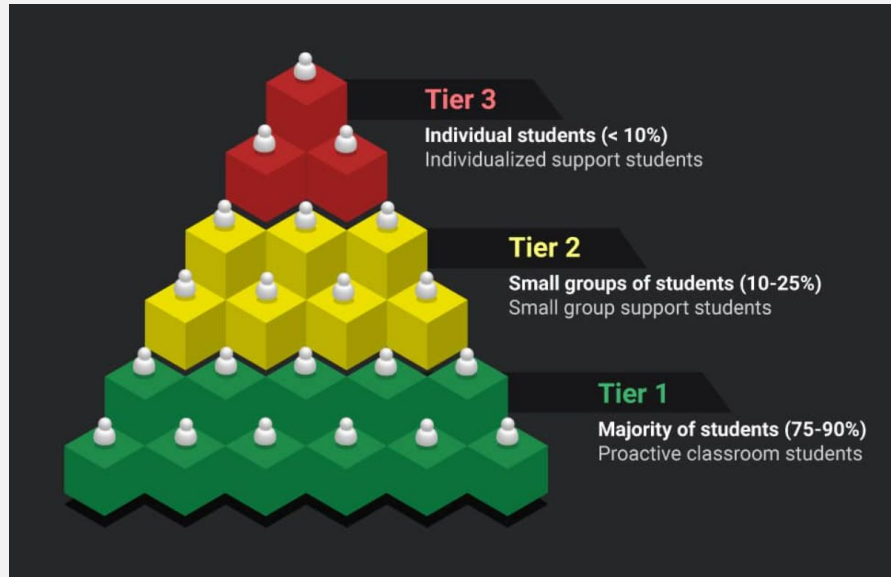
Multi-Tiered System of Supports



# What is a multi-tiered system of support?

What it is:

**Multi-Tiered System of Supports (MTSS)** is a framework that helps educators provide academic and behavioral strategies for students with various needs. MTSS grew out of the integration of two other intervention-based frameworks: [Response to Intervention](#) (RtI) and [PBIS](#).



# What is a multi-tiered system of support?

## **Tier 1 – Universal or primary – Majority of students (75-90%)**

As the largest tier, and the foundation for the entire framework, Tier 1 encompasses the entire school with core instructions and basic interventions. This structure helps to build positive relationships between staff and students. It includes proactive classroom management strategies aimed at creating a supportive atmosphere. Students who do not respond to these interventions may move into Tier 2.

## **Tier 2 – Secondary – Small groups of students (10-25%)**

Some students need a little extra assistance in meeting academic and behavioral goals, and it is in Tier 2 that these individuals receive that help. Often these interventions and supports are delivered in small group settings, such as reading groups. [Check-In/Check-Out](#) (CICO) interventions are often a part of Tier 2, as well. This targeted support allows students to work toward catching up with their peers.

## **Tier 3 – Tertiary – Individual students (< 10%)**

A subset of students has significant challenges that do not respond to the interventions and supports in Tier 1 or Tier 2. Tier 3 gives these students individualized supports and can include assistance from outside agencies such as behavioral counselors or family therapists.

# Key Components of MTSS

Instead of the “waiting for failure” assessment model of pre-IDEA days, MTSS takes a proactive approach to identifying students with academic or behavioral needs. Early assessment and intervention for these students can help them catch up with their peers sooner. The key components of MTSS include:

- Universal screening of all students early in the school year
- Tiers of interventions that can be amplified in response to levels of need
- Ongoing data collection and continual assessment
- Schoolwide approach to expectations and supports
- Parent involvement

The integrated instruction model of MTSS uses collected data to assess student needs and provide them with interventions in appropriate tiers.



# MTSS at Springer

## Problem Solving Team:

- School Administration
- School Counselors
- School Social Worker
- School Psychologists
- School Nurse
- Special Education Coordinators
- Teachers (when applicable)

# How it works at tier-II/III

## Student

Students present with behaviors or needs that begin to show they need a higher level of support:

- Behavior-increase in office referrals, suspensions, etc.
- Attendance-increase in absences
- Grades-strong decrease in grades



## Referral

Referral is put into the system. The forms include:

- Teacher
- School Counselor
- School Nurse
- Parent



## Review at PST

PST Team meets weekly to review referrals and applicable data. Team determines what, if any, interventions can be put into place. Interventions include:

- CICO (mentoring point based system)
- Various groups
- Individual counseling
- SSW Intervention for Resources
- Data is checked at 4-6 weeks

# MTSS: Springer Asset Map

## MTSS Building Asset Mapping

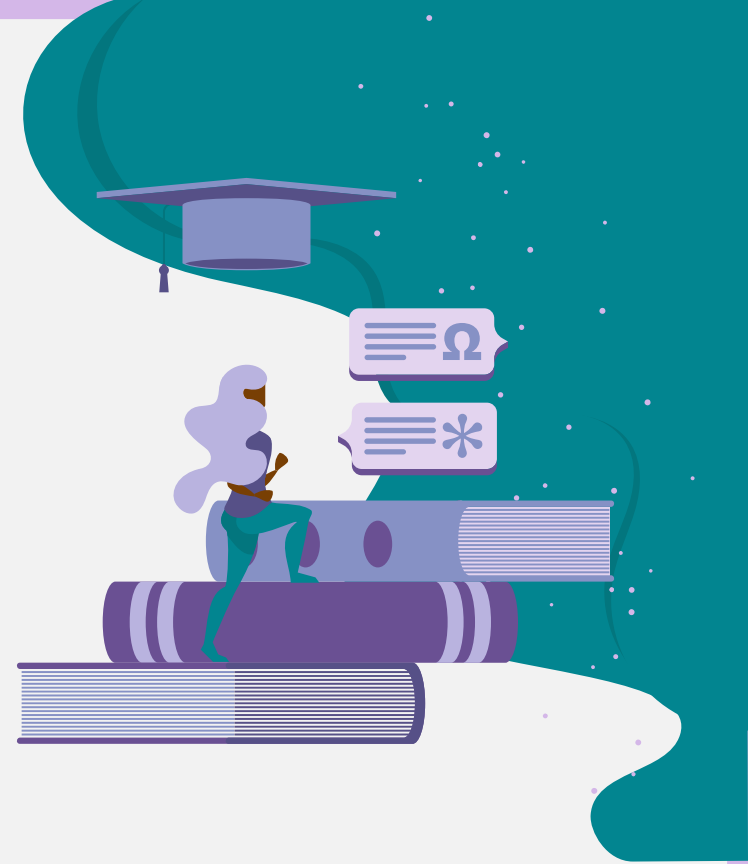
School: Springer Middle School

SY: 23/24

Intervention Tier 3	Point Person	Min/ Max students in group?	Time in Group/ Cycle Dates	Target Group	Intent/Outcome goal (Data used)	Curriculum Used
Intervention Tier 2	Point Person	Min/ Max students in group?	Time in Group/ Cycle Dates	Target Group	Intent/Outcome goal (Data Used)	Curriculum Used
Emotional Regulation Girls Group (1)	Kaplan	:Session 2- Max: 12 Current # 4	6 Weeks Start Date:2/22/24 End Date:4/11/24	Girl's Group (Emotional Regulation)	increase self-esteem (pre/post test), improve peer relationships, decrease time out of class  Decreasing RAP referral data	Zones of Regulation  Anger Management Workbook for Teens



# O4: How You Can Help



# How You Can Help

## Groups

Collaborate and communicate groups or individuals who may help youth at SMS

## Resources

What new programs can you offer that will help our marginalized youth?

## Advocate

We need to work together to help build trust with the community

## Communicate

Inform Springer about programs, initiatives, etc. you are already doing to shared with families



Questions?

